



NEWMAN
COLLEGE

A CATHOLIC SCHOOL
EDUCATING IN THE
MARIST TRADITION

Year 12 Parent Information Evening

Monday 10 February 2020
Marist Auditorium

Challenge — Collaborate — Create — Celebrate



LET YOUR LIGHT SHINE MATTHEW 5:16

Newman College acknowledges and pays respect to the past, present and future Traditional Custodians and Elders of this nation and the continuation of cultural, spiritual and educational practices of Aboriginal and Torres Strait Islander peoples.

Ancestors have walked this country and we acknowledge their special and unique place in our nation's historical, cultural and linguistic identity.







God of Love,
You are with us in every transition and change.
As we enter this new era with excitement and even some anxiety,
We recall your deep compassion, presence, and abounding love.
We thank you for the gifts, talents and skills with which you have blessed us.

We thank you for the experiences that have brought us to this moment.
Be with us as we move forward, rejoicing with you and supporting one another.
We ask this through Jesus, Your Son, and Mary, our Mother

Mary our Good Mother – ***pray for us***

St Marcellin Champagnat – ***pray for us***

St John Henry Newman – ***pray for us***

St Mary of the Cross – ***pray for us***

And may we always remember to – ***pray for one another***



NEWMAN
COLLEGE

A CATHOLIC SCHOOL
EDUCATING IN THE
MARIST TRADITION

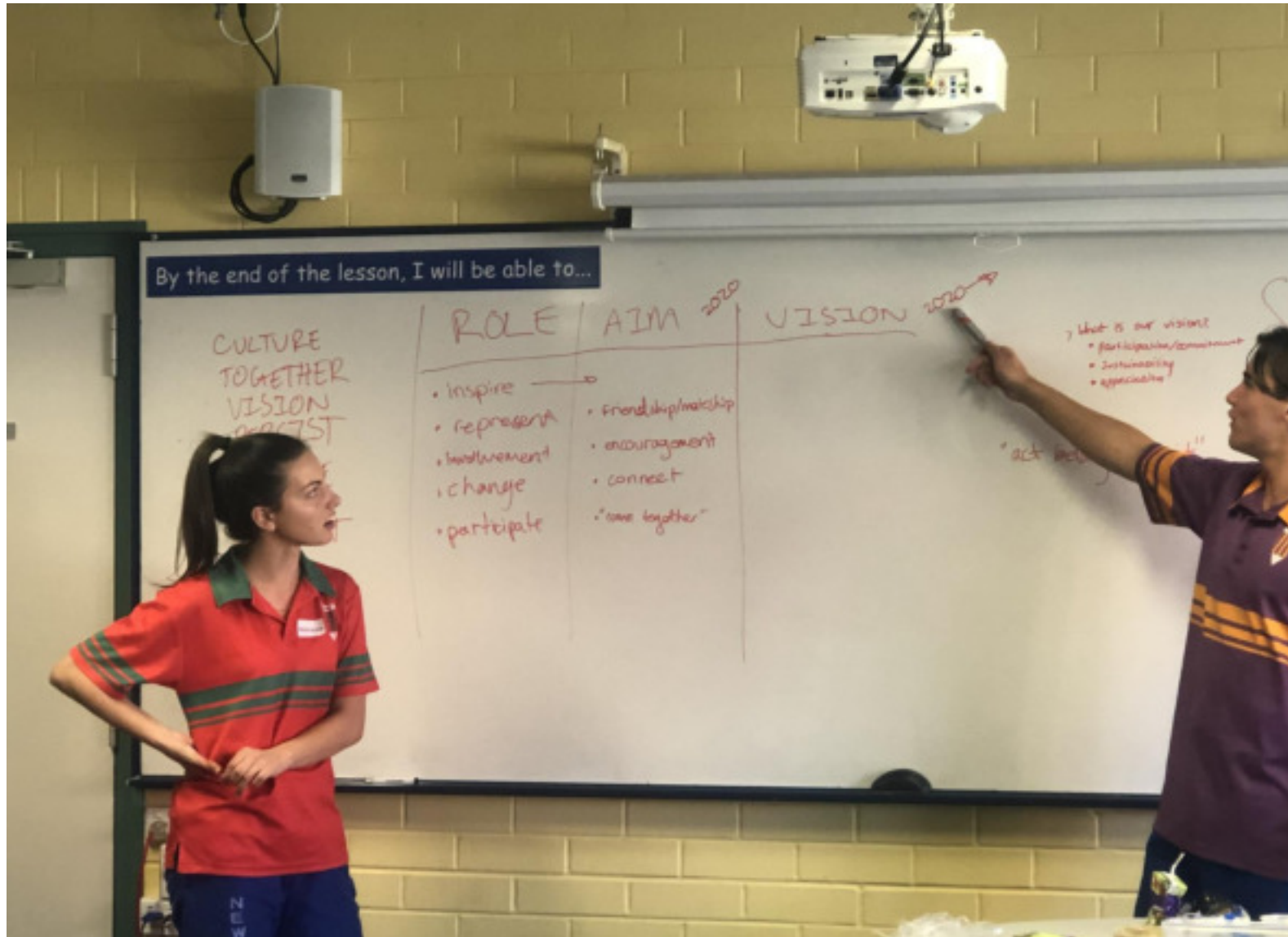
PRINCIPAL

John Finneran





Guild	Teacher
Brigid	Ms Liliana Bellandi
Camara	Miss Jorja Clark
Catherine	Mrs Jane Ward
Chisholm	Mrs Miranda Whitley
MacKillop	Miss Louise O'Mahony
Marcellin	Miss Cristina Guzzomi
Romero	Mr Bradley Cotterell
Thomas More	Ms Jamie Pedler



- Health & Wellbeing
- Academic Achievement
- Behaviour
- Student Voice & Leadership
- Attendance & Getting Involved
- Uniform & Grooming
- Supporting each other
- Building a Positive Culture





- Three terms of school left
- Raise expectations of yourself and what you are capable of
- What legacy do you want to leave behind?
- What examples do you want to set?
- What memories do you want your teachers and peers to have of you?
- What impact/changes do you want to make on the College?
- What do you want for your one and wild precious life?



*one wild and
precious life*



TOP EMPLOYING INDUSTRIES

 HEALTH CARE AND SOCIAL ASSISTANCE	1,685,100 employed at Nov 2018	79% female	Top employing occupations 1. Registered Nurses 2. Aged and Disabled Carers 3. Child Carers
 RETAIL TRADE	1,272,300 employed at Nov 2018	32% aged 15 to 24 years	Top employing occupations 1. General Sales Assistants 2. Retail Managers 3. Checkout Operators and Office Cashiers
 CONSTRUCTION	1,166,900 employed at Nov 2018	51% have a cert III or higher VET qual	Top employing occupations 1. Carpenters and Joiners 2. Electricians 3. Construction Managers
 PROFESSIONAL, SCIENTIFIC AND TECHNICAL SERVICES	1,082,100 employed at Nov 2018	77% full-time	Top employing occupations 1. Accountants 2. Software and Applications Programmers 3. Solicitors
 EDUCATION AND TRAINING	1,035,400 employed at Nov 2018	87% hold post-school qualifications	Top employing occupations 1. Primary School Teachers 2. Secondary School Teachers 3. Education Aides

**YOUNG PEOPLE NEED SKILLS AND EXPERIENCE
FOR JOBS OF THE FUTURE, NOT THE PAST**

70%

of young people currently enter the workforce
in jobs that will be radically affected by

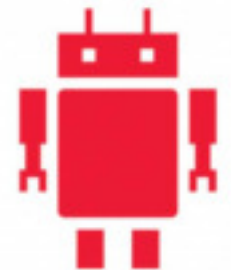
AUTOMATION

OCCUPATIONS:

ENTRY LEVEL

roles for young people are

DISAPPEARING



YOUNG PEOPLE WILL NEED MORE ENTERPRISING SKILLS TO FIND WORK



Source: Casner-Lotto & Barrington 2006; CISCO 2010; Kahn et al 2012; ACARA 2013; Furlong et al 2011; Loader 2011; Kahn et al 2011; McNeil et al 2012, Binkley et al 2012

- Problem Solving
- Communication
- Financial Literacy
- Critical Thinking
- Creativity
- Teamwork
- Digital Literacy
- Presentations Skills





- Homework Club
 - Subject Master Classes
 - Teacher Support
- Goal Setting
- WACE Packages
 - Exemplar Responses
 - Past Exams or ESTs
 - Grade Descriptors
 - Glossary of Key Terms
- School Psychologists
- OLNA Support



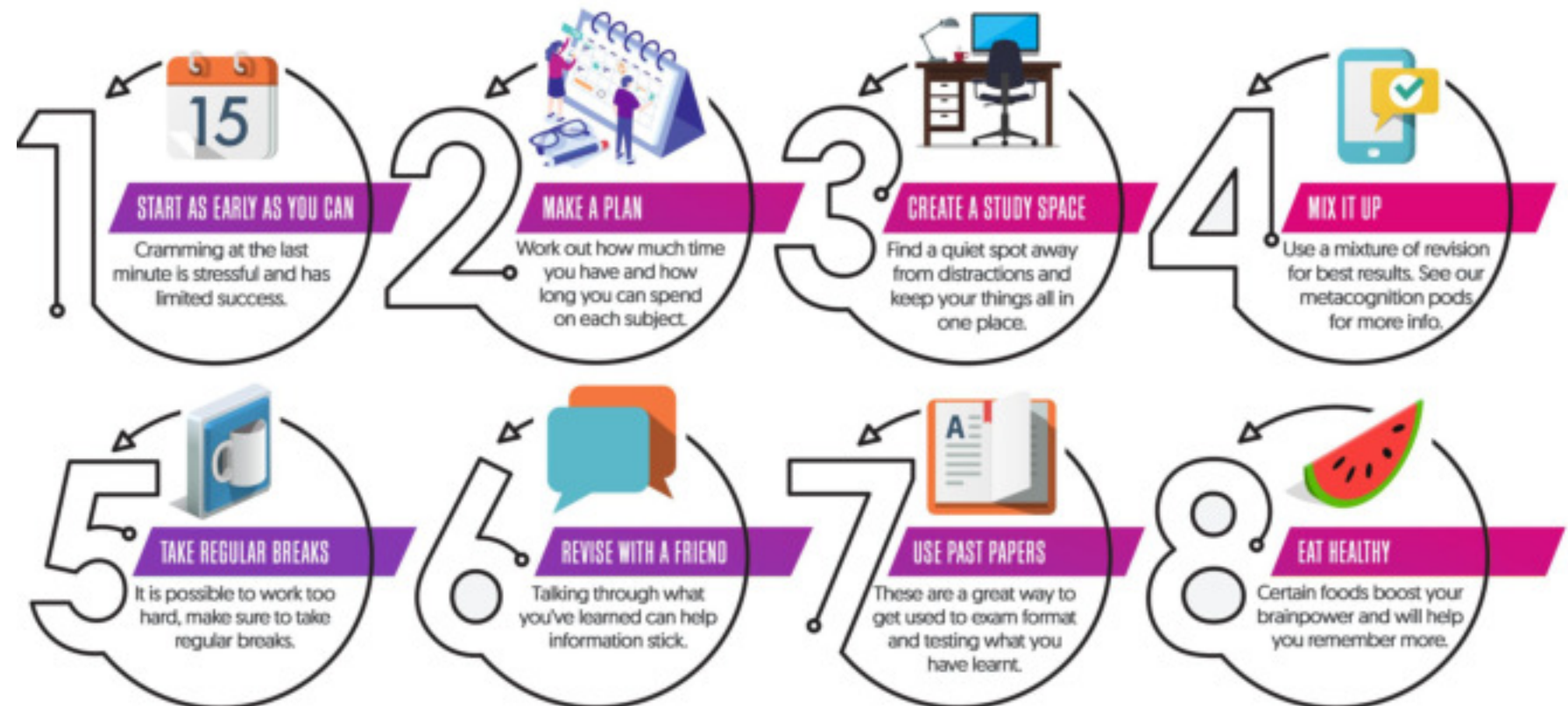
LET YOUR LIGHT SHINE
MATTHEW 5:16

Recommended Homework Time:

- 3 hours, 5 times a week

TOP REVISION TIPS

Don't let the stress of revision overwhelm you. Stay in control with these top tips.





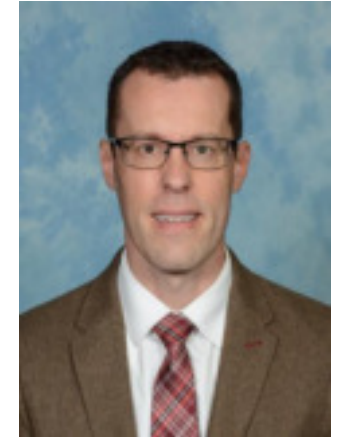
Learning Support Coordinator
Mrs Quinn-Pagett



Mr MacNeill
VET Coordinator



Acting Literacy Support Coordinator
(Term 1)
Carolyn O'Connor



Pathways Coordinator
Mr Justin Farley



Justin Farley

justin.farley@cewa.edu.au

- Pathways and Course Counselling
- Careers Counselling





NEWMAN
COLLEGE

A CATHOLIC SCHOOL
EDUCATING IN THE
MARIST TRADITION

2019 Results

Challenge — Collaborate — Create — Celebrate



LET YOUR LIGHT SHINE MATTHEW 5:16



NEWMAN MEDIAN ATAR

81.35

% OF NEWMAN
ATAR ABOVE 90

25%

% OF STUDENTS WHO RECEIVED
THEIR FIRST PREFERENCE
AT A UNIVERSITY

65%

173 OF 177 STUDENTS
RECEIVED A WACE

97.7%

CEWA MEDIAN ATAR

82.05%

STATE MEDIAN ATAR

81.05 %



THE
HIGHEST
ATAR

ALEXANDRA
CAVANAGH

99.7



MICHAEL
ADAMOS

99.1



Highest CEWA School

Based on the percentage of students who had Year 12 ATAR course combined scores in the top 15% of all students in the course.

- ***Literature***
- ***Mathematics Methods***
- ***Outdoor Educations***

High Achievers 90+ ATAR



NEWMAN
COLLEGE

A CATHOLIC SCHOOL
EDUCATING IN THE
MARIST TRADITION



Alexandra
Cavanagh



Michael
Adamos



Catherine
Jamieson



Joe-Massimo
Del Re



Rose
Troon



Isabelle
Pang



Jack
Burgess



Madeleine
Thompson



Caitlin
Grant



Georgia
Condon



Danny
McCloskey



Patrick
Diamond



Jacob
Arto



Cara
Ross



Isabel
Ramsay



Jayden
Tang



Jordan
Leckie



Elizabeth
Adams



John
Travaglini



Jacob
Marcon



Luka
Moukine



Jacinta
Cbesson



Megan
Petbick



Kiara
Camisa-Cason



Benjamin
Miniello



Molly
York



Kyle
Peou



SUBJECT CERTIFICATE OF EXCELLENCE

Jordan Leckie

• *Mathematics Applications*

EXCELLENT SCHOOL ACHIEVEMENT CERTIFICATES OF DISTINCTION

Michael Adamos

Caitlin Grant

Jack Burgess

Catherine Jamieson

Alexandra Cavanagh

Benjamin Miniello

Joe-Massimo Del Re

Isabelle Pang

Patrick Diamond

CERTIFICATES OF MERIT

Elizabeth Adams

Amelia Hornby

Jacob Arto

James Kerr

Jessica Baggetta

Grace Lovegrove

Freya Beattie

Danny McCloskey

Kiara Camisa-Cason

Daniel O'Connor

AnnMaree Celisano

Isabel Ramsay

Jacinta Chesson

Cara Ross

Georgia Condon

Jayden Tang

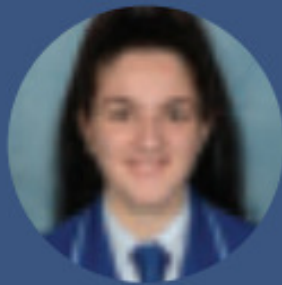
Emily Finlayson

Madeleine Thompson

Lauren Fisher

Rose Troon

VOCATIONAL EDUCATION AND TRAINING (VET)



Jessica Baggetta

- *Certificate II in Visual Arts
(Wood Focus)*
- *Certificate III in Animal
Studies*

73 Certificate II Awarded

29 Certificate III Awarded



NEWMAN
COLLEGE

A CATHOLIC SCHOOL
EDUCATING IN THE
MARIST TRADITION

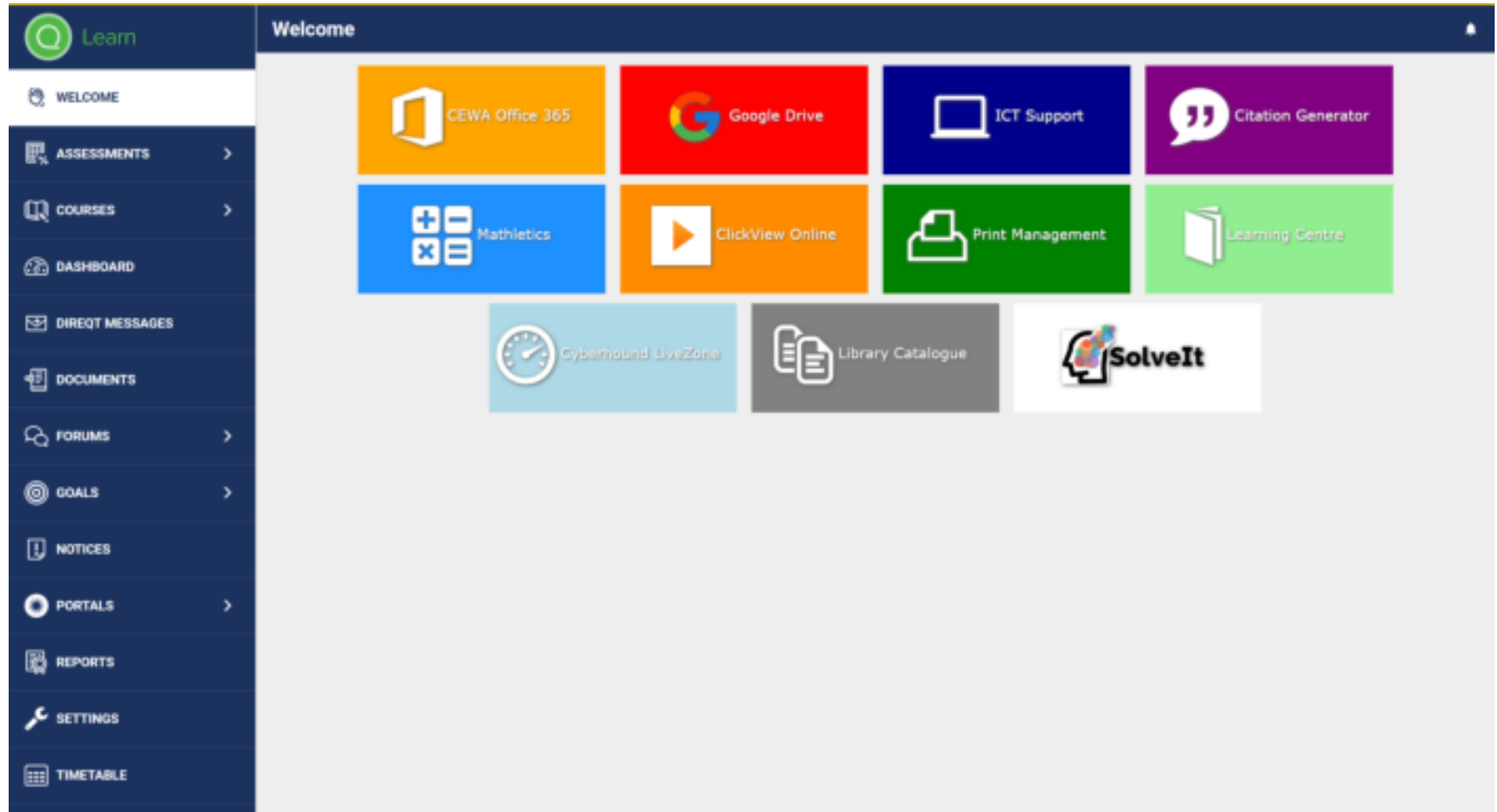
SEQTA

Challenge — Collaborate — Create — Celebrate



LET YOUR LIGHT SHINE MATTHEW 5:16

SEQTA
Homepage has
links to the
different options



The screenshot displays the SEQTA Learn homepage. On the left is a dark blue sidebar with a 'Learn' header and a list of navigation options: WELCOME, ASSESSMENTS, COURSES, DASHBOARD, DIRECT MESSAGES, DOCUMENTS, FORUMS, GOALS, NOTICES, PORTALS, REPORTS, SETTINGS, and TIMETABLE. The main content area has a 'Welcome' header and a grid of colorful tiles for various services: CEWA Office 365, Google Drive, ICT Support, Citation Generator, Mathematics, ClickView Online, Print Management, Learning Centre, Cybermound LiveZone, Library Catalogue, and SolveIt.

Service	Icon Description
CEWA Office 365	Office 365 logo
Google Drive	Google Drive logo
ICT Support	Laptop icon
Citation Generator	Speech bubble icon
Mathematics	Math symbols icon
ClickView Online	Play button icon
Print Management	Printer icon
Learning Centre	Open book icon
Cybermound LiveZone	Gauge icon
Library Catalogue	Books icon
SolveIt	Head with puzzle pieces icon



WELCOME

ASSESSMENTS >

COURSES >

DASHBOARD

DIRECT MESSAGES

DOCUMENTS

FORUMS >

GOALS >

NOTICES

PORTALS >

REPORTS

SETTINGS

TIMETABLE

Dashboard

No options selected +

UNRESOLVED ABSENCES

Please bring a note authorising any absences to student reception.

HOMEWORK

Students are reminded that homestudy is part of their academic performance, and should be completed prior to the due date.

Year 12 Mathematics Methods 2020

Ex 1A
→ Add to my to-do list

Ex1B
→ Add to my to-do list

Ex 1C
→ Add to my to-do list

Year 12 ATAR ECONOMICS 2020

Explain in a paragraph what you understand by the term "globalisation"
→ Add to my to-do list

Copy down slides covered in class.(1-9)
Read through the textbook pages 2-8-highlight/underline
Answer questions 1-10 on page 20
Go through the notes handed out to you.
Have a question for tomorrow
→ Add to my to-do list

Ensure slides 12-21 are copied in notebooks.
→ Add to my to-do list

Homework
Ensure all your notes are completed. Complete copying out the PowerPoint.

Read through the textbook and make a note of anything you do not understand. (Remember we are only up to the end of competitiveness.

Make sure you have your syllabus and can tick off the first 3 dot point under global interdependence.

Direct message me if you need help. My SEQTA messages are now working.
→ Add to my to-do list

Year 12 English ATAR 2020

Read and annotate 'Brave New World: Introduction'

TIMETABLE

SUN 9 FEB MON 10 FEB

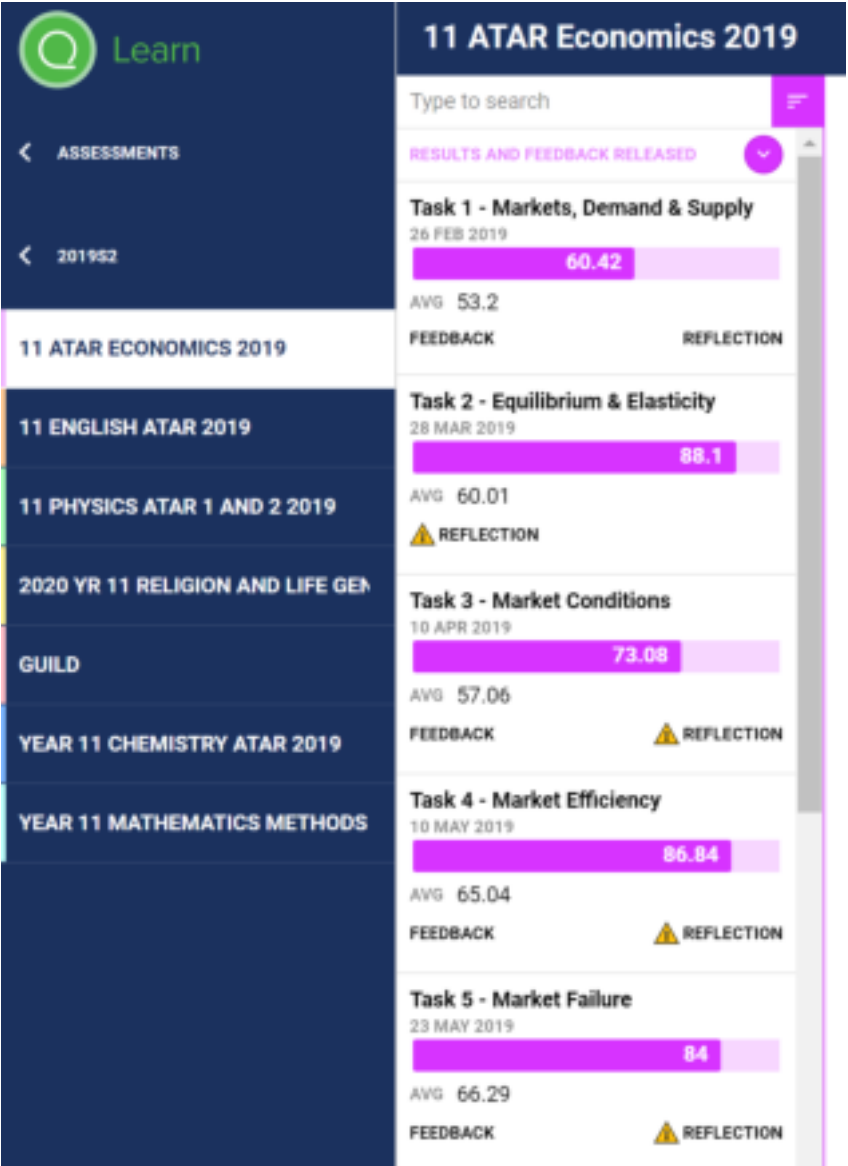
7:00		
8:00		
9:00		Economics ATAR 08:45-09:40 Mrs Miranda Whalley T Block GPLA 13
10:00		Mathematics Methods ATAR 09:40-10:35 Mrs Carla Pastorelli S Block GPLA 15
11:00		Guild - Catherine
12:00		English ATAR 11:15-12:05 Mrs Jenny Miranda N Block GPLA 15
13:00		Religion & Life General 12:05-12:55 Miss Aleisha Crump B Block GPLA 13
14:00		Physics ATAR 13:35-14:25 Mr John Spraggins Science Laboratory 24
15:00		Chemistry ATAR 14:25-15:15 Mr Albert Zollo Science Laboratory 23
16:00		
17:00		



Upcoming assessments will
list tasks.

Dates will change if
assessments are updated

The screenshot displays the 'Q Learn' mobile application interface. The top navigation bar is dark blue with a green 'Q' logo and the word 'Learn'. Below this, a dark blue bar contains a back arrow and the word 'ASSESSMENTS'. The main content area is divided into two columns. The left column, titled 'UPCOMING', lists various assessment categories with colored vertical bars on the left: '2020 YEAR 12 RELIGION AND LIF' (pink), 'GUILD - THOMAS MORE YEAR 12' (blue), 'YEAR 12 ATAR ECONOMICS 2020' (yellow), 'YEAR 12 CHEMISTRY ATAR 2020' (purple), 'YEAR 12 ENGLISH ATAR 2020' (light blue), 'YEAR 12 MATHEMATICS METHO' (teal), and 'YEAR 12 PHYSICS ATAR 3 & 4 20' (green). Below these are five rows for previous years: '2019S2', '2018S2', '2018S1', '2017S2', and '2017S1', each with a right-pointing arrow. The right column, titled 'Upcoming', features a search bar labeled 'Type to search'. Below the search bar is a list of assessment tasks, each with a colored circular icon on the right: 'ECONOMICS ATAR' (yellow), 'MATHEMATICS METHODS ATAR' (teal), 'PHYSICS ATAR' (green), 'RELIGION & LIFE GENERAL' (pink), and 'ENGLISH ATAR' (yellow). The 'ENGLISH ATAR' section is expanded, showing a list of tasks: 'Task One - Reading Comprehension' (25 FEB 2020), 'Task Two: Composing Portfolio' (9 MAR 2020), 'Task Three: Genre Study Comparative Essay' (7 APR 2020), 'Task 4: Multimodal Interpretive Text' (11 MAY 2020), 'Task 5: Examination' (25 MAY 2020), 'Task 6: A Streetcar Named Desire Essay' (30 JUL 2020), 'Task 7: Comprehending - Image Analysis' (4 AUG 2020), 'Task 8: Comparative Essay' (25 AUG 2020), 'Task 9: Persuasive speeches in context' (14 SEP 2020), and 'Task 10: Semester 2 Exam' (5 OCT 2020).



Results will be released and available to students and parents.



NEWMAN
COLLEGE

A CATHOLIC SCHOOL
EDUCATING IN THE
MARIST TRADITION

Assessment Guidelines and Procedures

Year 11 & 12

Challenge — Collaborate — Create — Celebrate



LET YOUR LIGHT SHINE MATTHEW 5:16

Assessment Policy – Unplanned Absence (E.g. illness, injury, misadventure)



NEWMAN
COLLEGE

A CATHOLIC SCHOOL
EDUCATING IN THE
MARIST TRADITION

Assessment Type	Procedure	Action/Consequence
Assignments	Inform teacher of absence via SEQTA Send the assignment in via SEQTA or Student Reception Establish new due date on consultation with the teacher if long term illness. Medical certificate required.	If the unplanned absence is merely on the due date, the task should be submitted electronically or via Student Reception. <u>A zero will be awarded if no medical certificate is provided.</u> If the unplanned absence is longer term due to illness etc. then parents, teachers and the Leader of Learning may determine a new due date.
VET (Certificate) Qualifications	Inform teacher of absence via SEQTA Send the competencies in via SEQTA or Student Reception Establish new due date on consultation with the teacher if long term illness. Medical certificate required	The student must submit unit competencies by the due date, as specified by the teacher. Failure to do so will result in the student being graded as 'Not Competent'. Students who fail to submit unit competencies by the due date may be placed on academic detention by the Leader of Learning.
In-class Assessment	Inform teacher of absence via SEQTA Establish catch-up of assessment in missed assessments Medical certificate required	With the Leader of Learning's approval, the test (the same one or an alternative) may be completed by the student on their return at one of the two closest missed assessment sessions. <u>A zero will be awarded if no medical certificate is provided.</u>
Examination	Parents are requested to contact the College as soon as possible to inform of their child's absence AND a Medical Certificate must be presented to the Leader of Wellbeing on the day of the student's return.	The student may be permitted to sit the exam for practice. At the Leader of Learning's discretion, a standardised exam score may be calculated. <u>A score of zero will be given if there is no medical certificate provided.</u>

Assessment Policy – Approved Absence (E.g. College endorsed event, State/National Representatives or equivalent)



NEWMAN
COLLEGE

A CATHOLIC SCHOOL
EDUCATING IN THE
MARIST TRADITION

Assessment Type	Procedure	Action/Consequence
Assignments	Work is to be submitted prior to departure (or by negotiation with the Leader of Learning)	If not submitted by the agreed date, 10% of the student's assessed mark will be deducted for each day. After 7 days, a mark of zero will be given and an Academic Detention may be issued.
VET (Certificate) Qualifications	Work is to be submitted prior to departure (or by negotiation with the Leader of Learning)	The student must submit unit competencies by the due date, as specified by the teacher. Failure to do so will result in the student being graded as 'Not Competent'. Students who fail to submit unit competencies by the due date may be placed on academic detention by the Leader of Learning.
In-class Assessment	Any planned absence must be discussed by the parent/student with the Leader of Learning / Wellbeing in advance of the absence.	In consultation with the Leader of Learning and class teacher, a student may be will be required to complete the same or alternative test during a missed assessment session.
Examination	The parent must discuss them with the Leader of Wellbeing / Learning in advance of the absence.	The student will not be penalised if the absence is approved. An opportunity may be provided for the student to sit the exam for practice. At the Leader of Learning's discretion, a standardised exam score may be calculated.

Assessment Policy - Unapproved Absence (E.g. Family Holidays)



NEWMAN
COLLEGE

A CATHOLIC SCHOOL
EDUCATING IN THE
MARIST TRADITION

Assessment Type	Procedure	Action/Consequence
Assignments	Work is to be submitted prior to departure.	If not submitted by the agreed date, 10% of the student's assessed mark will be deducted for each day. After 7 days, a mark of zero will be given and an Academic Detention may be issued.
VET (Certificate) Qualifications	Work is to be submitted prior to departure.	The student must submit unit competencies by the due date, as specified by the teacher. Failure to do so will result in the student being graded as 'Not Competent'. Students who fail to submit unit competencies by the due date may be placed on academic detention by the Leader of Learning.
In-class Assessment	Any unapproved absence needs to be avoided as a score of zero will be awarded.	Missing an assessment due to an unapproved absence, such as being on holidays, will result in a score of zero for that assessment. Parents and students are requested to make every effort to avoid such a situation.
Examination	Any unapproved absence needs to be avoided as a score of zero will be awarded.	Missing an examination due to an unapproved absence, such as being on holidays, will result in a score of zero for that assessment. Parents and students are requested to make every effort to avoid such a situation.



NEWMAN
COLLEGE

A CATHOLIC SCHOOL
EDUCATING IN THE
MARIST TRADITION

WACE Requirements

Challenge — Collaborate — Create — Celebrate



LET YOUR LIGHT SHINE MATTHEW 5:16



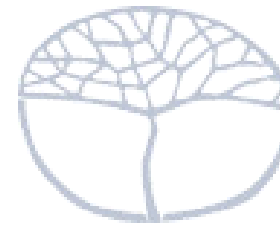
- Breadth and depth
- Achievement standard
- Literacy and Numeracy

ATAR

- Examinations

General pathway

- Externally set tasks



School Curriculum
and Standards
Authority

Breadth-and-depth requirement

- Completion of a minimum of 20 units, which may include unit equivalents attained through VET and/or endorsed programs. This requirement must include at least a minimum of ten Year 12 units, or the equivalent
- Four units from an English learning area course, including at least one pair of Year 12 units from an English learning area course
- One pair of Year 12 units from each of List A (arts/languages/social sciences) and List B (mathematics/science/technology).

Achievement standard

- Achievement of at least 14 C grades or higher (or the equivalent) in Year 11 and 12 units, including at least six C grades (or equivalent) in Year 12 units.
- Completion of at least four Year 12 ATAR courses
- **Literacy and numeracy standard**
- Demonstration of the minimum standard of literacy and a minimum standard of numeracy



- Attendance
- Participation in College life
- OLNA
- Incomplete Certificates
- Predicted ATAR
- Pathway



Essential web sites

- **TISC:** <https://www.tisc.edu.au/static/home.tisc>
University Pre-requisites, minimum ATAR cutoffs,
ATAR calculation, Marks adjustments.
- **SCSA:** <https://www.scsa.wa.edu.au>
Past Examination papers and Answers, Year 12
Information Handbook about WACE,
Examinations



- Applications are considered on merit and SCSA are responsible for the final decision.
- If you think an application should be submitted please discuss immediately with Mrs Pagett.
- Up to date assessment information of the condition / disability and its current impact will be required

- **Academic Review:** Friday 6 March (Week 5)
 - Teachers will identify any students who are underachieving and if a course change is recommended.
- **Year 11/12 Parent Teacher Interviews:** Thursday 12 March (Week 6)
- **Last date for subject change:** Monday 16 March (Week 7)

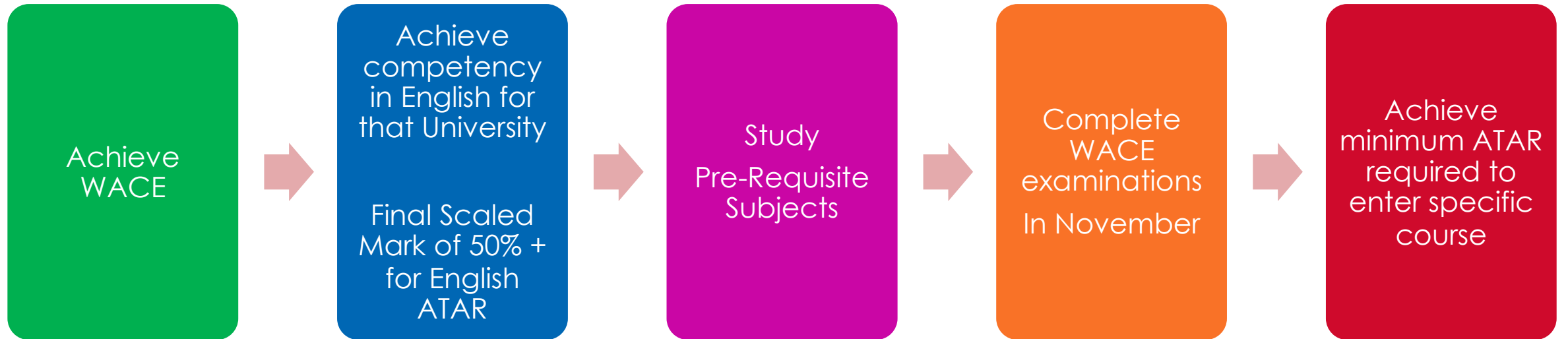
2019

- 13 students on a Uni bound pathway
- 15 students doing extra study (TAFE/Uni Prep etc.)
- 5 students completing a Certificate IV

2020

- 27 students in Curtin Uni Ready
- 30 students completing External Studies

University Entry using ATAR



University Entrance not using ATAR

Certificate IV
+ Final
Scaled Mark
of 50% for
ATAR English
+ WACE

Certificate
qualifications
or portfolio
entry for
creative
courses

Bridging
courses





NEWMAN
COLLEGE

A CATHOLIC SCHOOL
EDUCATING IN THE
MARIST TRADITION

College Policies

Challenge — Collaborate — Create — Celebrate




LET YOUR LIGHT SHINE MATTHEW 5:16



- College website/ Newsletter
- The code of conduct extends to all staff, students, parents, carers and volunteers
- The code
 - Values dignity of every person
 - Fosters positive relationships
 - Ensures confidentiality and accountability
 - Supports professional boundaries



- College ICT resources may only be used for an educational purpose as instructed by College staff.
 - **As of 2020, mobile phones and/or devices cannot be carried by students throughout the school day and must be switched off, or on silent and placed in their locker. Mobile phones that can be seen or heard may be confiscated by the teacher and a consequence issued.**
 - Offensive material or conduct is not permitted.
 - Students are not permitted to photograph or film other students or teachers.
- 



Students require Permission to Drive and Park at School.

Conditions:

1. Student parking will be in the car park number 5, east of the main Administration building.
2. The speed limit in the car park and school grounds is 8 kph.
3. Extreme caution is to be taken at all times, especially when reversing.
4. Exit from the car park is after 3.30pm unless given direction by the staff member on duty.
5. The car park is out of bounds to all students during the school day including those drivers with a permit and their passengers.
6. Cars/scooters must not be taken from the car park during the school day for any reason without permission from the Leader of Wellbeing – Year 12. Students who wish to attend a medical or other appointment during the school day must have a note from parents/guardians and sign out from Administration.
7. Only those students listed on this permission form may be transported by the nominated driver at any time.
8. When this form has been completed and permission granted, the student will receive a parking sticker. Students must display their parking permit sticker at all times.
9. Those students riding a scooter must wear a helmet and are encouraged to wear a “hi visibility” top.
10. Should information change, please notify your LOWB so the records can be updated.



NEWMAN
COLLEGE

A CATHOLIC SCHOOL
EDUCATING IN THE
MARIST TRADITION

Keeping Safe: Child Protection Curriculum

Challenge — Collaborate — Create — Celebrate



LET YOUR LIGHT SHINE MATTHEW 5:16

Why a child protection curriculum?

Children and young people have a right to

- Be treated with respect and be protected from harm
- Feel and be safe in their interactions with adults and other children and young people
- Understand, as early as possible, what is meant by 'feeling and being safe'
- And, receive the support of staff in their education whose role included advocacy for their safety and wellbeing



The KS: CPC teaches all children, in an age appropriate way to;

- Recognise abuse and tell a trusted adult about it
- Understand what is appropriate and inappropriate touching, and
- Understand ways of keeping themselves safe

In Years 10 – 12, the following topics are covered:

The right to be safe	Relationships	Recognising and reporting abuse	Protective strategies
<ul style="list-style-type: none">• Risk-taking and emergencies• Psychological pressure and manipulation	<ul style="list-style-type: none">• Rights and responsibilities• Identity and relationships• Power in relationships• Trust and networks	<ul style="list-style-type: none">• Privacy and the body• Recognising abuse• Cyber safety• Domestic and family violence	<ul style="list-style-type: none">• Strategies for keeping safe• Network review and community support



- Active listening
- Discussion with your child
- Encouraging the development of respectful relationships through role modelling
- Supporting and monitoring children's developing networks
- Reinforcing it is okay to say 'no'
- Monitoring changes in behaviour
- Monitoring online use and teaching good digital citizenship
- Supporting children to practice problem solving strategies



NEWMAN
COLLEGE

A CATHOLIC SCHOOL
EDUCATING IN THE
MARIST TRADITION

Upcoming Events

Challenge — Collaborate — Create — Celebrate



LET YOUR LIGHT SHINE MATTHEW 5:16



Term 1	
Week	PCG Activity
1	Principal's Assembly
2	Guild Activity
3	High Achievers Assembly
4	Retreat/ Ash Wednesday
5	Armed for Life Presentation
6	Year Assembly
7	Butterfly Foundation Presentation
8	Creating Momentum with Dr Jane
9	Principal's Assembly
10	Guild Activity

Term 2	
Week	PCG Activity
1	Year Assembly
2	Year 10 & 12 Mass
3	PCG
4	Guild Activity
5	Exams
6	Exams
7	Pathways & Careers
8	Principal's Assembly
9	Jade Lewis Presentation
10	Guild Activity



Term 3	
Week	PCG Activity
1	Wellbeing Activity
2	Keeping Safe
3	Year Assembly
4	TISC Forms/TAFE Applications
5	Year 10 & 12 Mass
6	PCG
7	University/TAFE Presentations
8	Red Frog Presentation
9	Guild Activity
10	Principal's Assembly

PK-12 Family Mass

- Thursday 13 February, 5:30pm
- Commissioning of Year 12 Student Leaders will take place during the Mass





- Monday 24 February – Friday 28 March
- Retreat A (Monday – Wednesday):
Brigid, Camara, Catherine & Chisholm
- Retreat B (Wednesday – Friday):
MacKillop, Marcellin, Romero and
Thomas More
- Retreat Letter & Consent2Go
- Normal Timetable when not on Retreat



Year 12 College Ball

- Friday 27 March
- Frasers – Kings Park
- Attendance by Invitation
- Dress expectations, as per College guidelines
- Finish school 12.00pm Friday 27 March





- Student Leavers Jackets and Ties will be blessed at the K-12 Family Mass
- Students will receive their jacket, prior to mass, from their PCG teachers in the DG rooms.
- Students will be able to wear their jackets on Mondays, at guild events, year group masses and other events throughout the year





- The student common room (N22) will be open from Thursday of week 2
- Kitchen appliances will be provided as well as coffee, tea milk etc
- Students are asked to bring their own mug from home
- Respect the space and others who will use it



- Date: TBC
- Must attend if you are involved ONSITE this year.

- Monday 25 May – Friday 5 June

- ## Semester Two (Mock Exams):

- Monday 5 October – Friday 16 October



EST

- Monday 4 May - Friday 22 May (Weeks 2 – 4 of Term 2)
- Worth 15% course mark
- Completed in class under exam conditions

ATAR Exams

- Practical Exams: Saturday 26 September – Sunday 18 October
- Written Exams: Monday 2 November – Friday 20 November
- Timetables available: Wednesday 10 June





Test	Round One	Round Two
Writing	3 – 5 March	31 August – 2 September
Numeracy & Reading	3 – 27 March	31 August – 25 September



- **Thursday 20 February:** Year 7 – 12 Swimming Carnival (Challenge Stadium)
- **Monday 24 February – Friday 28 February:** Year 12 Retreat
- **Thursday 12 March:** Year 11 & 12 Parent Teacher Interviews
- **Monday 16 March:** Year 7 – 12 Guild Cross Country
- **Friday 27 March:** Year 12 Ball
- **Monday 25 May - Friday 05 June:** Year 12 Semester 1 Exams
- **Tuesday 30 June:** Year 10 – 12 Photo day
- **Tuesday 21 July:** K-12 Parent Teacher Interview Day
- **Monday 5 October – Friday 16 October:** Semester Two Exams
- **Monday 19 October – Wednesday 21 October:** Year 12 Semester 2 Exam Feedback
- **Thursday 22 October:** Year 12 Graduation





NEWMAN
COLLEGE

A CATHOLIC SCHOOL
EDUCATING IN THE
MARIST TRADITION



LET YOUR LIGHT SHINE
MATTHEW 5:16

Sustaining our Vision for Learning

- Quality teaching
- Collaboration
- #2020Vision

Challenge — Collaborate — Create — Celebrate



- College fortnightly newsletter
- Classroom Teachers
- PCG Teacher
- Newman Parents Forum
- Parent emails sent via Seqta

carla.pastorelli@cewa.edu.au
9204 9422

Newman News

30 January 2020

Shine
through
Discovery

LET YOUR LIGHT SHINE MATTHEW 5:16

Thank you

Newman College
216 Empire Avenue
Churchlands
WA 6018

Marian Campus
49 Peebles Road
Floreat
WA 6014

T 08 9204 9444
newman.wa.edu.au

