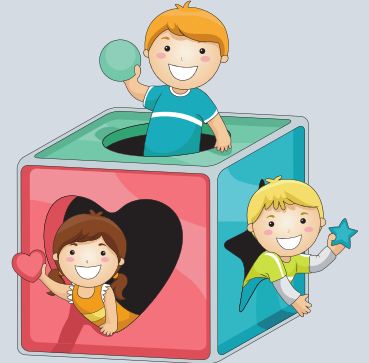


Early Childhood: Years PK-2

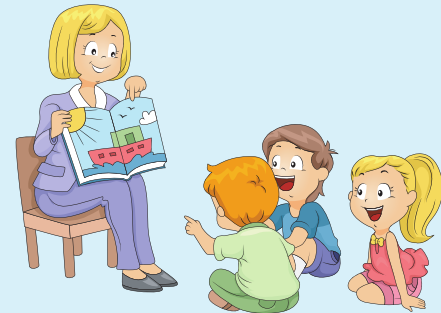
Mode of Delivery

- Your weekly learning schedule will be communicated by 9am every Monday morning.
- All learning will be distributed by Seesaw and will include play based activities, numeracy and literacy tasks



Communication

- Classroom teachers will be available via a Teams Video call at the following times:
 - 9.00am Kindergarten
 - 9.15am Pre-primary
 - 9.30am Year 1
 - 9.45am Year 2
- Kindergarten to Year 2 teachers will be available for any communication from parents using email (48hr turnaround).
- Teachers will provide feedback on completed tasks throughout the week.



Environment

- Establish a daily routine and prepare for effective learning.
- Identify a comfortable, quiet shared space to complete your work.
- Balance learning activities with adequate breaks, quiet times and keeping active.
- Students should maintain appropriate dress and grooming standards when joining video meetings.



ICT Assistance

Email: ictsupport@newman.wa.edu.au If you require further assistance call 9204 9479 (Mon - Fri 8am - 4pm)

