



A CATHOLIC SCHOOL
EDUCATING IN THE
MARIST TRADITION

Year 9 Information Evening

Monday 20 February 2023

Challenge — Collaborate — Create — Celebrate



LET YOUR LIGHT SHINE MATTHEW 5:16



NEWMAN
COLLEGE

A CATHOLIC SCHOOL
EDUCATING IN THE
MARIST TRADITION

Mrs Sarah Ellam

Deputy Principal Secondary (Acting)

Challenge — Collaborate — Create — Celebrate



LET YOUR LIGHT SHINE MATTHEW 5:16

Acknowledgement of Country



NEWMAN
COLLEGE

A CATHOLIC SCHOOL
EDUCATING IN THE
MARIST TRADITION

Newman College acknowledges and pays respect to the past, present and future Traditional Custodians and Elders of this nation and the continuation of cultural, spiritual and educational practices of Aboriginal and Torres Strait Islander peoples.

Ancestors have walked this country and we acknowledge their special and unique place in our nation's historical, cultural and linguistic identity.



“Let no one ever come to you without leaving better and happier. Be the living expression of God’s kindness: kindness in your face, kindness in your eyes, kindness in your smile.”



A photograph of a library with several students in school uniforms. Some are sitting at tables, some are talking, and some are reading. The word "Prayer" is overlaid in the center in white text with a white underline.

Prayer



A CATHOLIC SCHOOL
EDUCATING IN THE
MARIST TRADITION

Dr Lucie McCrory

Acting Principal

Challenge — Collaborate — Create — Celebrate



LET YOUR LIGHT SHINE MATTHEW 5:16

**created
+ called**

a revolution of love and tenderness

Marist Theme 2023



NEWMAN
COLLEGE

A CATHOLIC SCHOOL
EDUCATING IN THE
MARIST TRADITION



Created and Called

A revolution of love and tenderness



NEWMAN
COLLEGE

A CATHOLIC SCHOOL
EDUCATING IN THE
MARIST TRADITION

DANNY GREEN

Professional Boxer

"I was a Newman College kid who had a wild dream of becoming champion of the world."

"I set about achieving this dream by forging a reputation as a relentlessly hard worker."

"I say this as a reminder that nothing comes easy, but covering ourselves in glory in moments like this justify all the pain, hard work and sacrifice."

Daniel 'Danny' Green
Newman College Class of 1990

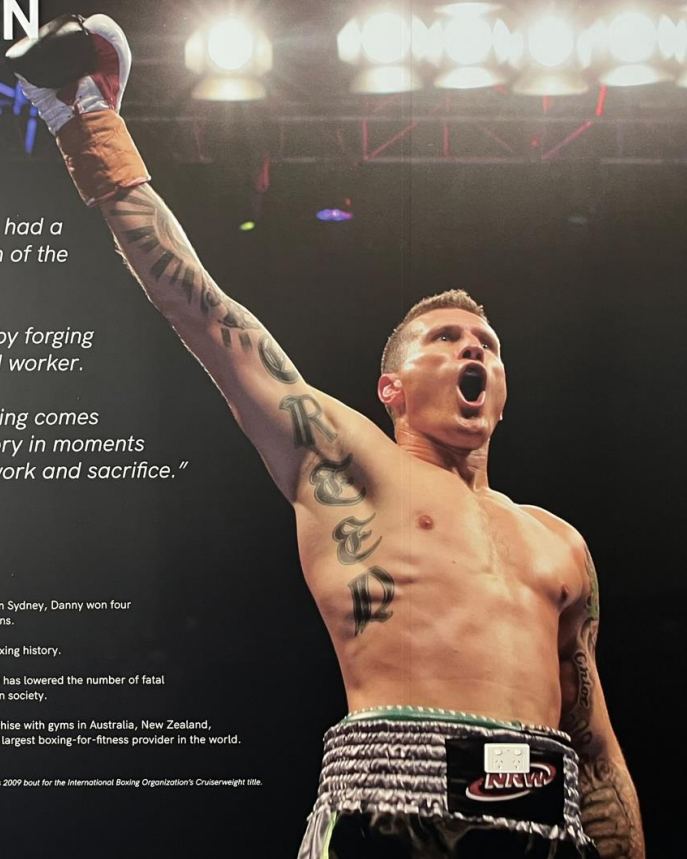
After competing as an amateur boxer at the 2000 Olympic Games in Sydney, Danny won four professional boxing world titles across three different weight divisions.

Danny fought in the top three 'pay-per-view' bouts in Australian boxing history.

In 2012 he launched the 'Stop the Cowards Punch' campaign which has lowered the number of fatal attacks and altered the language surrounding such acts in Australian society.

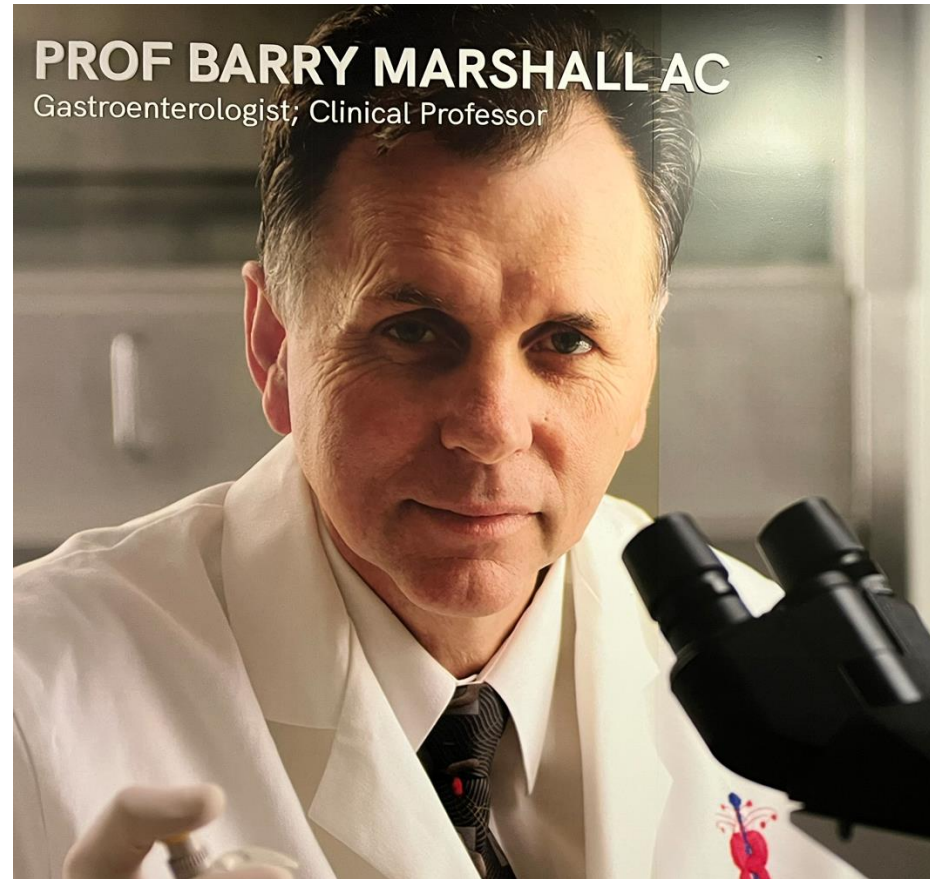
In 2014 he co-founded UBX - Boxing and Strength, a global franchise with gyms in Australia, New Zealand, Singapore, UK, Japan and the USA. UBX is on track to become the largest boxing-for-fitness provider in the world.

Image: Danny Green after defeating International Boxing Hall of Famer Roy Jones Junior in his 2009 bout for the International Boxing Organization's Cruiserweight title.



PROF BARRY MARSHALL AC

Gastroenterologist; Clinical Professor



"Be curious. The greatest discoveries are made by people asking questions. Evaluate new information, follow the science, but question the evidence."

"The most rewarding times of my life have been discovering new knowledge which changed people's lives for the better."

Professor Barry Marshall AC
Newman College Class of 1968

In 1983 Barry, and his colleague Robin Warren, wrote a paper for the Gastroenterological Society of Australia proposing their theory that gastric ulcers were caused by the bacterium (and carcinogen) *Helicobacter pylori*.

They were widely ridiculed for it, but he knew he was right - and went on to bravely prove it by swallowing some of the bacterium.

Awarded:

- The Nobel Prize in Physiology or Medicine in 2005
- Western Australian of the Year in 2006
- The Companion of the Order of Australia in 2007 for service to medicine and to medical research

Created and Called A revolution of love and tenderness



NEWMAN
COLLEGE

A CATHOLIC SCHOOL
EDUCATING IN THE
MARIST TRADITION

DAVID McALLISTER AC

The Australian Ballet:
Principal Dancer 1989-2001
Artistic Director/Choreographer 2001-2020

"My time at Newman College was where I learnt resilience and perseverance which set me on the path to achieve my dreams."

"It is great to see how the artistic life of the school has grown and the encouragement for its young artists to shine."

David McAllister AC
Newman College Class of 1980

David joined The Australian Ballet in 1983. After his time as Principal Artist from 1989 to 2001, he became the longest serving Artistic Director and Choreographer in the history of The Australian Ballet.

Awarded:
- Centenary Medal in 2001
- A Member of the Order of Australia in 2004
- The Companion of the Order of Australia in 2021
- The highest accolade in dance from the Royal Academy of Dance; the Queen Elizabeth II Coronation Award in 2021



DANIEL RICCIARDO AM Formula 1 Driver

"Newman College is the only school I ever went to. Family spirit has remained central to the way I've lived my life, and I was supported here in pursuing my dream by my friends, teachers, and the community. I fulfilled that dream by becoming a Formula 1 Race Car driver and Grand Prix winner."

"I believed in me - and they did, too."

"Believe in yourself. Be present in the moment, and love what you do. If doubt creeps in, find a way to shut it out and remind yourself that you belong here."

Daniel Ricciardo AM
Newman College Class of 2006

Daniel's eight Grand Prix victories place him among the most successful drivers in the turbo-hybrid era. His time in Formula 1 has included stints at Toro Rosso, Red Bull and McLaren Racing teams. He has been described as a honey badger for his racing style: *"the most fearless animal in the animal kingdom ... but he's a good guy."*

In 2022 he broke the Australia record for the most Formula 1 Grand Prix starts.

Daniel was appointed a Member of the Order of Australia in 2022 for significant service to motor sport as a competitor and ambassador, and to the community.



NEWMAN
COLLEGE

A CATHOLIC SCHOOL
EDUCATING IN THE
MARIST TRADITION

Mrs Beth Murphy

**Deputy Principal
Teaching and Learning**

Challenge — Collaborate — Create — Celebrate



Shine
through
Discovery

LET YOUR LIGHT SHINE MATTHEW 5:16

20
22

OUR PERFORMANCE

NEWMAN MEDIAN ATAR

85.25

% OF NEWMAN ATAR ABOVE 90

37.5 %

STUDENTS ACHIEVED WACE

97.1 %

STATE MEDIAN ATAR

83.45 %

THE HIGHEST ATAR

OWEN
KARAMFILES
99



JACKSON
KALLAWK
98.4



ISABELLA
MEYER
97.4



20
22

ATAR 90+



Andrea Acuna Andrew Sutherland Aneika Short Callum McGough Costanza Di Muccio



Elissa Parin Emily Burgess Gianluca Sardi Isabella Meyer Jackson Kallawk



Jacob Iannantuoni Jaxon Bizzaca Jessica Ledger Julia Carbone Katie Nevin



Kieran Richards Leila Arnold Luke Prentice Makenzie Williams Matthew Folan



Max Hobson Nicholas Manning Olivia Dixon Orson Baugh Owen Karamfiles



Saskia Wigley Tyler Meyer

OUTSTANDING ACHIEVEMENTS IN AN ATAR COURSE

EXCELLENT SCHOOL ACHIEVEMENT CERTIFICATES OF DISTINCTION

Elissa Parin
Isabella Meyer
Jackson Kallawk
Jacob Iannantuoni
Owen Karamfiles

CERTIFICATES OF MERIT

Andrea Acuna
Aneika Short
Aoife Burns
Eliana Celisano
Emily Burgess
Emily Holland
Gianluca Sardi
Jessica Ledger
Julia Carbone
Katie Nevin

Leila Arnold
Luke Prentice
Makenzie Williams
Max Hobson
Olivia Dixon
Orson Baugh
Saskia Wigley

SUBJECT EXHIBITION

Saskia Wigley
• Outdoor Education

VOCATIONAL EDUCATION

Eliana Celisano
• Certificate III in Community Services
• Certificate IV in Community Services

33 CERTIFICATE II AWARDED
27 CERTIFICATE III AWARDED
9 CERTIFICATE IV AWARDED
54 CURTIN UNI READY GRADUATES

Years 7-9 Assessment Policy



NEWMAN
COLLEGE

A CATHOLIC SCHOOL
EDUCATING IN THE
MARIST TRADITION

Assessment Policy

- Student and parent responsibilities

In-Class Assessments:

- If a student is absent from an in-class assessment
- Parental contact with the College is required to state the reason for absence is required.
- **Missed Assessments:** Summative (where a student can sit the assessment and receive a mark for). Students should complete the assessment in one of the two closest missed assessment sessions (i.e., if a student is sick for an assessment on Tuesday, the tasks must be completed on Wednesday or Friday). If students do not complete the task during the allocated missed assessments sessions, then a zero score will be recorded.
- **Unapproved Absences:** Given the nature of assessment in Years 7 to 9, a standardised score will also be generated on the first occurrence of an unapproved absence in the calendar year.

Assignments:

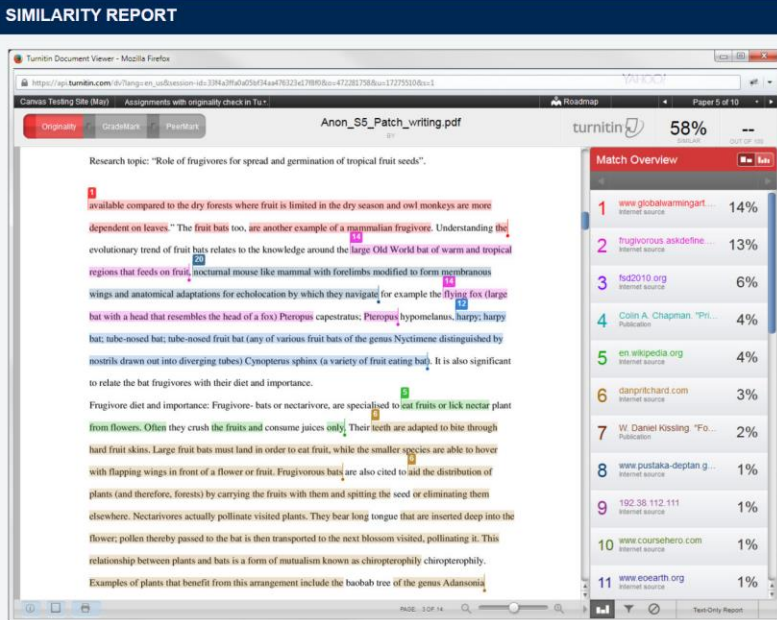
- If a student is absent on the due date of an assignment the work should still be submitted to the teacher online, before absence or immediately on students return to school.

Extended Planned Absence: Write to Vice Principal for approval



Turnitin

- An online software program that can detect similarities between an *existing work* and your *submitted work*.
- Turnitin's database contains *billions* of works, such as:
 - Web Pages (blogs, organizational websites, Wikipedia)
 - Articles (scientific journals, book reviews, abstracts)
 - Other Student Papers (your own work, and the work of others).
- After the Turnitin software has completed comparing your work to the contents of its database, a **Similarity Report** is generated.
- **REMEMBER!** Having similarities in your work **DOES NOT NECESSARILY MEAN** you have committed plagiarism! Your Teacher will review the similarities and determine their nature.



SIMILARITY REPORT

Turnitin Document Viewer - Mozilla Firefox

https://api.turnitin.com/... Assignments with originality check in T... Roadmap Page 5 of 10

Canvas Testing Site (Mail) Anon_S5_Patch_writing.pdf turnitin 58% OUT OF 100

Originality Score: 58%

Research topic: "Role of frugivores for spread and germination of tropical fruit seeds".

available compared to the dry forests where fruit is limited in the dry season and owl monkeys are more dependent on leaves." The fruit bats too, are another example of a neotropical frugivore. Understanding the evolutionary trend of fruit bats relates to the knowledge around the large Old World bat of warm and tropical regions that feeds on fruit. Neotropical mouse-like mammal with forelimbs modified to form membranous wings and anatomical adaptations for echolocation by which they navigate, for example the flying fox (large bat with a head that resembles the head of a fox) Pteropus caepstratus; Pteropus hypomelanus, harpy; harpy bat; tube-nosed bat; tube-nosed fruit bat (any of various fruit bats of the genus Nyctimene distinguished by nostrils drawn out into diverging tubes) Cynopterus sphinx (a variety of fruit eating bat). It is also significant to relate the bat frugivores with their diet and importance.

Frugivore diet and importance: Frugivore- bats or nectarivore, are specialised to eat fruits or lick nectar plant from flowers. Often they crush the fruits and consume juices only. Their teeth are adapted to bite through hard fruit skins. Large fruit bats must land in order to eat fruit, while the smaller species are able to hover with flapping wings in front of a flower or fruit. Frugivorous bats are also cited to aid the distribution of plants (and therefore, forests) by carrying the fruits with them and spitting the seed or eliminating them elsewhere. Nectarivores actually pollinate visited plants. They bear long tongue that are inserted deep into the flower; pollen thereby passed to the bat is then transported to the next blossom visited, pollinating it. This relationship between plants and bats is a form of mutualism known as chiropterophily chiropterophily.

Examples of plants that benefit from this arrangement include the baobab tree of the genus Adansonia

Match Overview

Match	Source	Similarity
1	www.globalwarmingart.com	14%
2	frugivorous-askdefine.com	13%
3	fsd2010.org	6%
4	Colin A. Chapman "Pri..."	4%
5	en.wikipedia.org	4%
6	danpritchard.com	3%
7	W. Daniel Kissing "Fo..."	2%
8	www.pustaka-deptan.g...	1%
9	192.38.112.111	1%
10	www.coursethero.com	1%
11	www.ecoearth.org	1%

NAPLAN

- Tests are held between **Wednesday, 15 March to Monday, 27 March.**
- Australian Curriculum Authority have changed the measurement scale. It will not be the same as previous years.

The numerical NAPLAN bands and the national minimum standard will be replaced by the following 4 levels of achievement:

- Exceeding
- Strong
- Developing
- Needs additional support.

Western Australian Certificate of Education: One of the criteria is that students either achieve a NAPLAN Band 8 OR pass the OLNA.

- Band 8 no longer will exist. Thus, a report will be developed by the School Curriculum and Standards Authority for schools to make available to parents, carers and students. This will indicate whether a student has or has not pre-qualified for the Reading, Writing and/or Numeracy components of the Online Literacy Numeracy Assessment.
- OLNA will be sat in Term 4 2023 for those students who have not met the minimum literacy and numeracy standards.



NEWMAN
COLLEGE

A CATHOLIC SCHOOL
EDUCATING IN THE
MARIST TRADITION

Mr. Luke O Mara

Leader of Wellbeing Year 9

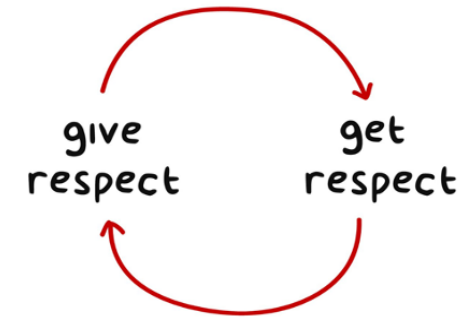
Challenge — Collaborate — Create — Celebrate



Shine
through
Discovery

LET YOUR LIGHT SHINE MATTHEW 5:16


Year 9
Theme- Engage
Focus- Respect



- **Respect** is key to positive relationships.
- Building **relationships** through **family spirit**.
- Academic **achievement** & excellence.
- Foster a **positive**, problem-solving attitude both inside and outside of school.
- Develop and encourage **student voice** and **leadership** opportunities in all forms of academic life.
- Encourage and closely monitor **student attendance**.
- **Engagement** with parents – building relationship with parents/guardians.
- Strong focus on **wellbeing** and **support** to encourage **engagement**.

STUDENT ENGAGEMENT

TELL ME AND I FORGET
TEACH ME AND I REMEMBER
INVOLVE ME
AND I LEARN



BENJAMIN FRANKLIN



- This new school year also offers you a chance for a **fresh start**. This is a time where you need to tap into the best version of yourself. Leave last year's attitude in last year.
- The value of **embracing** these new changes and challenges and using them to develop your sense of self and your place in the world.
- My goal is to encourage you to approach to this year with a sense of **purpose, determination** and **resilience**.





Expectations of Year 9's

- **Expectations:** Maintain high standards. Be a role model for younger students.
- **Excellence:** Promote a culture of excellence and support your peers in their endeavors and successes.
- **Respect:** yourself, others, the environment, your future and your legacy here at Newman College.
- **Punctuality:** show that your education and your teachers are a priority.
- **Organization:** be prepared, be responsible for your belongings & class materials, laptops (charged!!).
- **Engagement:** engage in your learning and make the environment a place where everyone's learning experience is valued and respected.



Wellbeing Supports:

- PCG Teacher, Subject Teacher, LOWB, School Psychologists and Mrs. Ellam (Deputy Principal for Secondary).

IT Support:

- IT Support Desk – JHN Hub → this should be done outside of class time

Academic Support:

- Subject Teacher, Homework Club or your peers Leader of Learning.
- Psychologists are also here to support your time management, organization and study skills. Speak to LOWB for a referral.

Uniform

- Uniform issues without a note or with an invalid reason (broken washing machine, left at the gym) will result in lunch detentions.
- Three uniform lunch detentions in a term = Monday College detention.
- Few points of note:
 - No clear spacers or studs allowed to keep piercings open.
 - Hair touching the top of the collar (boys and girls) must be tied up.
 - Hats must be worn on the oval at all times.
 - Skirts must reach the top part of the knee.
 - Shoes with formal uniform must have a hard sole and have laces.
- Students must use recess and lunch breaks to change into PE uniform for classes; *for example, a student who has PE Period 3 should be in their formal uniform in the morning, get changed at recess into PE uniform and changed back into formal uniform at lunch time.*



- All student mobile phones must be kept in lockers from 8.45am until 3.15pm; they must be switched off and out of sight all day!
- If a staff member sees a student with their phone out or earpods etc. in, the student will ask the staff member to hand over the phone, and these will be kept at Student Administration until the end of the day. The student is expected to attend a lunch detention in JHN2.8.



Code of Conduct



NEWMAN
COLLEGE

A CATHOLIC SCHOOL
EDUCATING IN THE
MARIST TRADITION

- College website/ Newsletter
- The code of conduct extends to all staff, students, parents, carers and volunteers
- The code
 - Values dignity of every person
 - Fosters positive relationships
 - Ensures confidentiality and accountability
 - Supports professional boundaries



Newman College Norms Our Non-negotiables

Our Vision for Learning - Let your light shine (Matthew 5:16) - reflects the Marist charism of Newman College and our unwavering belief that all members of our community can develop their unique abilities. To allow all members of our community to live out this vision to its truest potential, we respect and agree to a series of 'non-negotiables'.

A non-negotiable is similar to a commitment. It is something that will be upheld, no matter the situation. Non-negotiables can be a very powerful force in a school community as they provide consistency and clarity in expectations and help to create a positive and collaborative culture.



- College ICT resources may only be used for an educational purpose as instructed by College staff.
- **Mobile phones and/or devices cannot be carried by students throughout the school day and must be switched off, or on silent and placed in their locker. Mobile phones that can be seen or heard will be confiscated by the teacher and a consequence issued.**
- Offensive material or conduct is not permitted.
- Students are not permitted to photograph or film other students or teachers.
- If parents need to get in contact with their child during the school day, it should be done through Student Administration.



College Policies

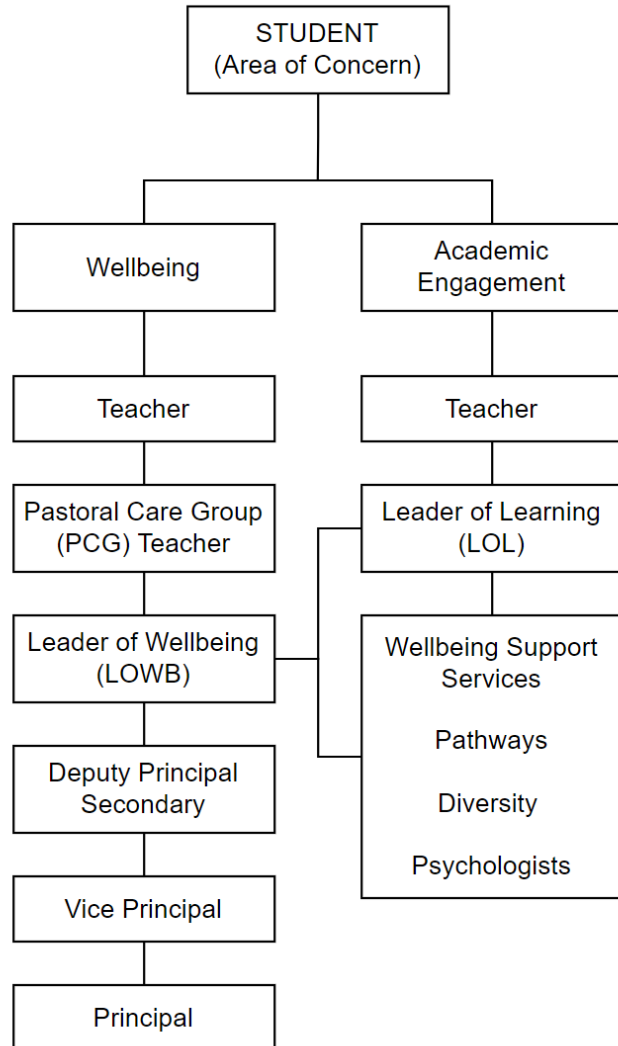


NEWMAN
COLLEGE

A CATHOLIC SCHOOL
EDUCATING IN THE
MARIST TRADITION

- Student Punctuality Policy and Procedure
 - Late arrivals to PCG time and lessons
- Lunchtime Detention
 - Issued for: ongoing late arrivals, uniform/grooming issues, mobile phone use, poor behaviour in class
- College Detention
 - Now occur on Mondays. No other dates or times offered.





PASTORAL CARE GROUP (PCG) TEACHER

- First point of contact for parents who have queries or concerns regarding their children
- Works closely with the Leader of Wellbeing to support students
- Assists with daily organisation: daily notices, diaries, lockers, College Events
- Supports faith formation: daily prayer in PCG, participation in year group Masses and College Events
- Where possible, journeys with the same group of students throughout Secondary School
- Builds rapport – know students

LEADER OF WELLBEING (LOWB)

- Operation of the Year Group
- Responsibility for the Year Group's overall Wellbeing, Learning and Faith Development
- Provides support for Student Wellbeing
- Aim to assist each student to be successful-success looks different for each of us
- Coordination of Wellbeing Program



Guild	Teacher
Brigid	Ms. Courtney Clark
Camara	Mr. Bern Willett
Catherine	Mrs. Nadia Napoli
Chisholm	Mr. Joel Kandiah
Marcellin	Mr. Albert Zollo
MacKillop	Miss. Sophie Monisse
Romero	Mr. Bradley Cotterell
Thomas More	Mr. Tom Williams

Keeping Safe: Child Protection Curriculum



NEWMAN
COLLEGE

A CATHOLIC SCHOOL
EDUCATING IN THE
MARIST TRADITION

The KS: CPC aims to help children and students from preschool to senior secondary learn to recognise abuse and develop ways of protecting themselves from abuse and, in wider terms, covers rights, relationships, responsibilities and ethical behaviour.

Focus Areas	Topics
The right to be safe	<ol style="list-style-type: none">1 Warning signs2 Risk-taking and emergencies3 Psychological pressure and manipulation
Relationships	<ol style="list-style-type: none">1 Rights and responsibilities2 Identity and relationships3 Power in relationships4 Trust and networks
Recognising and reporting abuse	<ol style="list-style-type: none">1 Privacy and the body2 Recognising abuse3 Cyber safety4 Domestic and family violence
Protective strategies	<ol style="list-style-type: none">1 Strategies for keeping safe2 Network review and community support

Wellbeing Program – Term 1



NEWMAN
COLLEGE

A CATHOLIC SCHOOL
EDUCATING IN THE
MARIST TRADITION

Term 1	
Week	PCG Activity
1	Year Assembly
2	Guild Assembly
3	High Achievers Assembly
4	Ash Wednesday
5	Goal Setting (PCG)
6	Mental Fitness Workshop
7	Azelene Williams- Effects of Vaping
8	Guild Activities
9	Mental Health and Wellness
10	Principal's Assembly

Key Dates



NEWMAN
COLLEGE

A CATHOLIC SCHOOL
EDUCATING IN THE
MARIST TRADITION

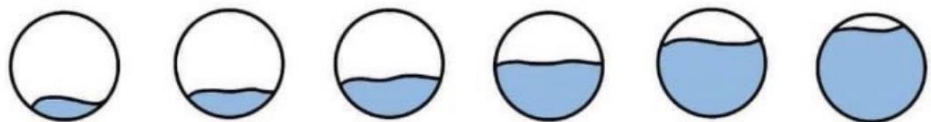
Weekly – Thursday - 8.10am – 8.40am	Thursday morning Community Mass in the Champagnat Chapel
Monday 27 February - 5.30pm	Newman Parents Executive & Newman Parents Representatives Induction John Henry Newman Learning Hub
Friday 28 April	Y7-12 Guild Cross Country Carnival



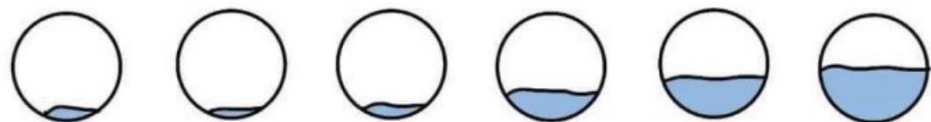


- Classroom Teachers
- PCG Teacher
- Newman Parents Forum (NPCC)
- College socials and website
- Teams

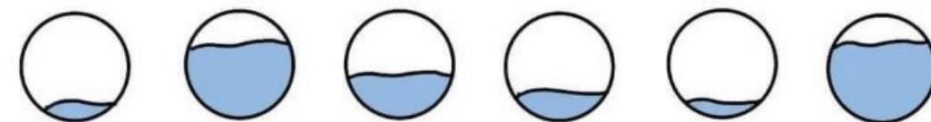
This is progress



This is also progress



And so is this



forward

You only need to focus on one little step forward. You don't need to conquer the entire mountain right now. You don't need to have everything figured out today. The only possible way to climb a mountain is by climbing it one step at a time. Don't think about the peak, don't worry about what may come later. Instead, focus on the one little step in front of you. The rest will come when it's time. For now, it's just one little step.

Where to now?- Goal Setting in PCG



NEWMAN
COLLEGE

A CATHOLIC SCHOOL
EDUCATING IN THE
MARIST TRADITION

Guild	Location
Brigid	JHN 2.3
Camara	JHN 2.5
Catherine	JHN 3.2
Chisholm	JHN 2.8
MacKillop	JHN 2.10
Marcellin	JHN 3.4
Romero	Library
Thomas More	Hub

Thank you

Newman College
216 Empire Avenue
Churchlands
WA 6018

Marian Campus
49 Peebles Road
Floreat
WA 6014

T 08 9204 9444
newman.wa.edu.au

